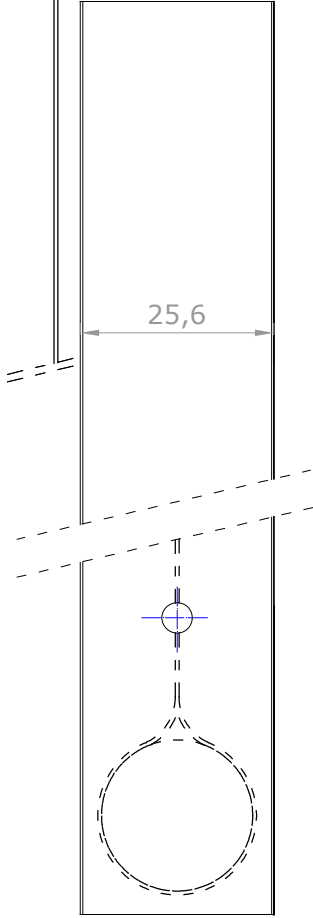
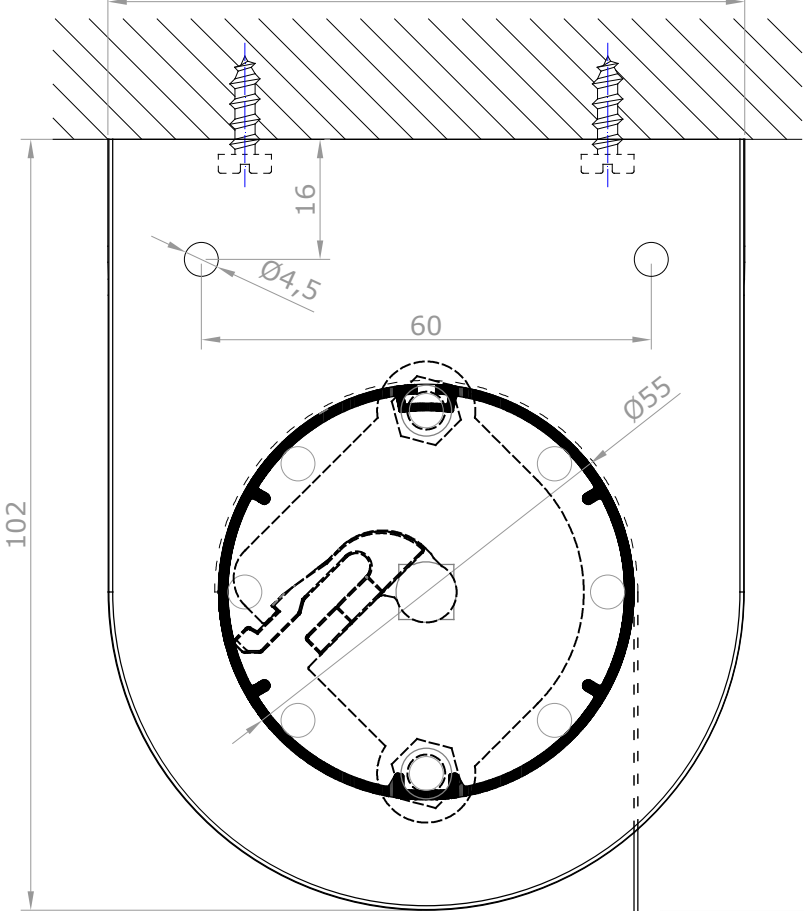
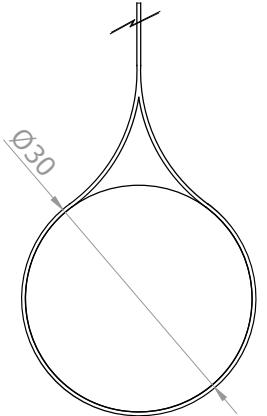
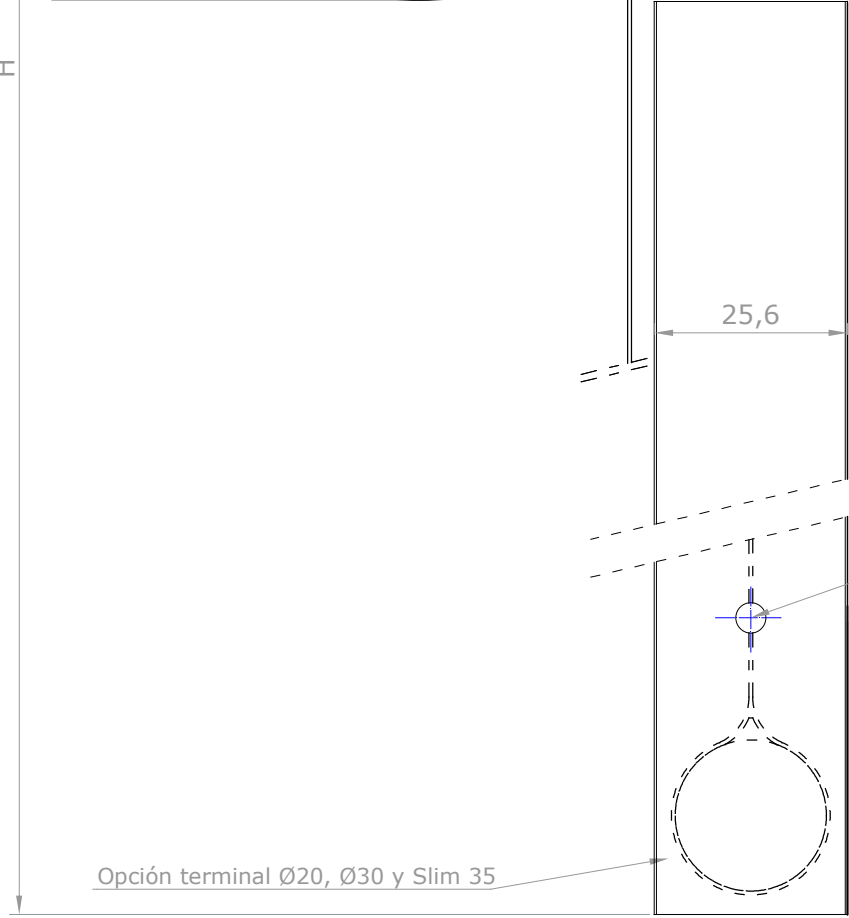
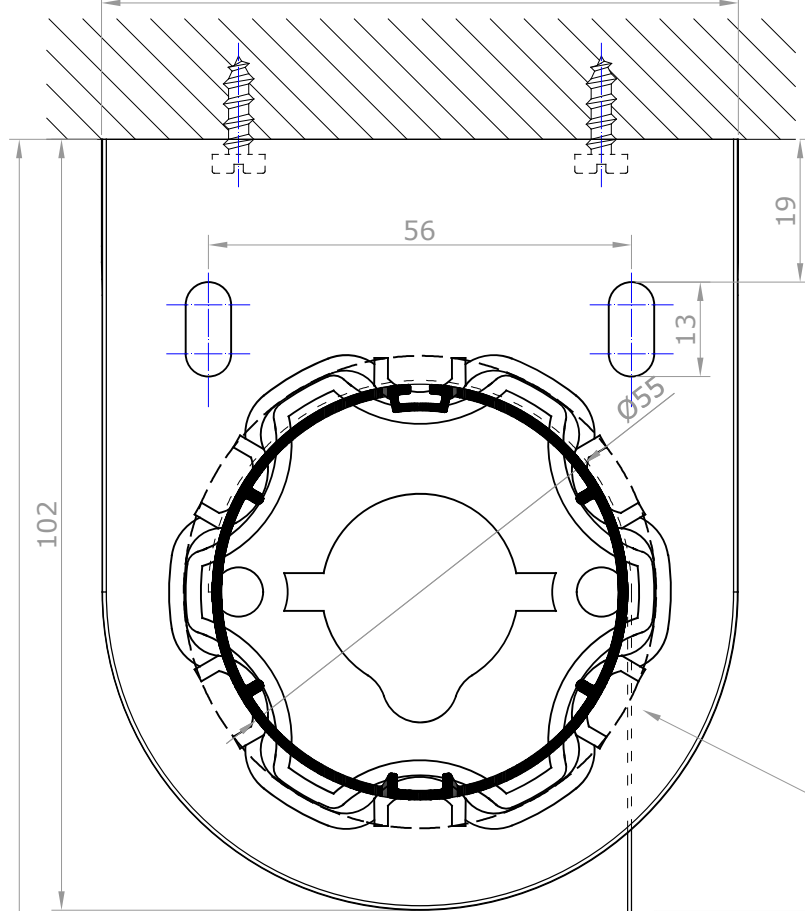


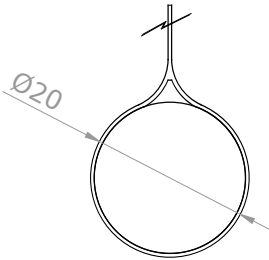
LADO APOYO



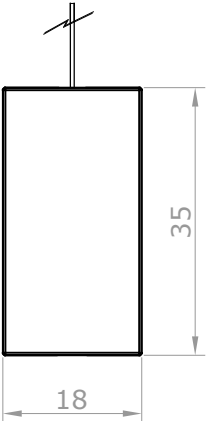
LADO MANDO



Detalle 1:1 terminal oculto Ø30mm



Detalle 1:1 terminal oculto Ø20mm

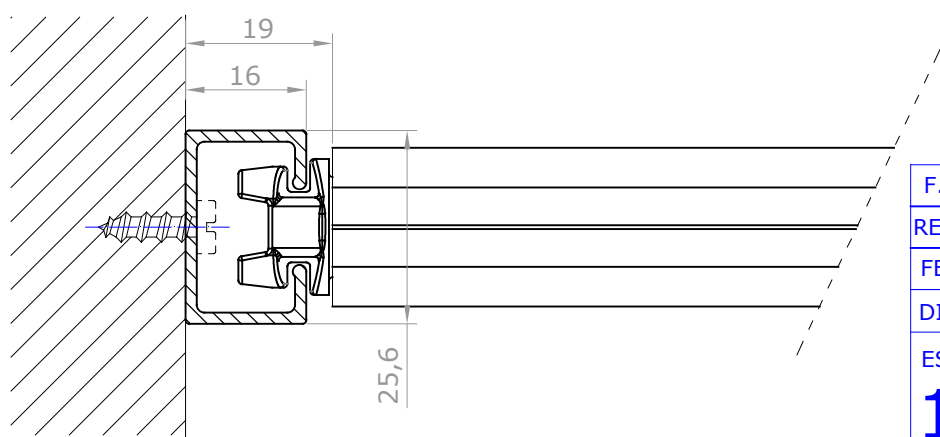
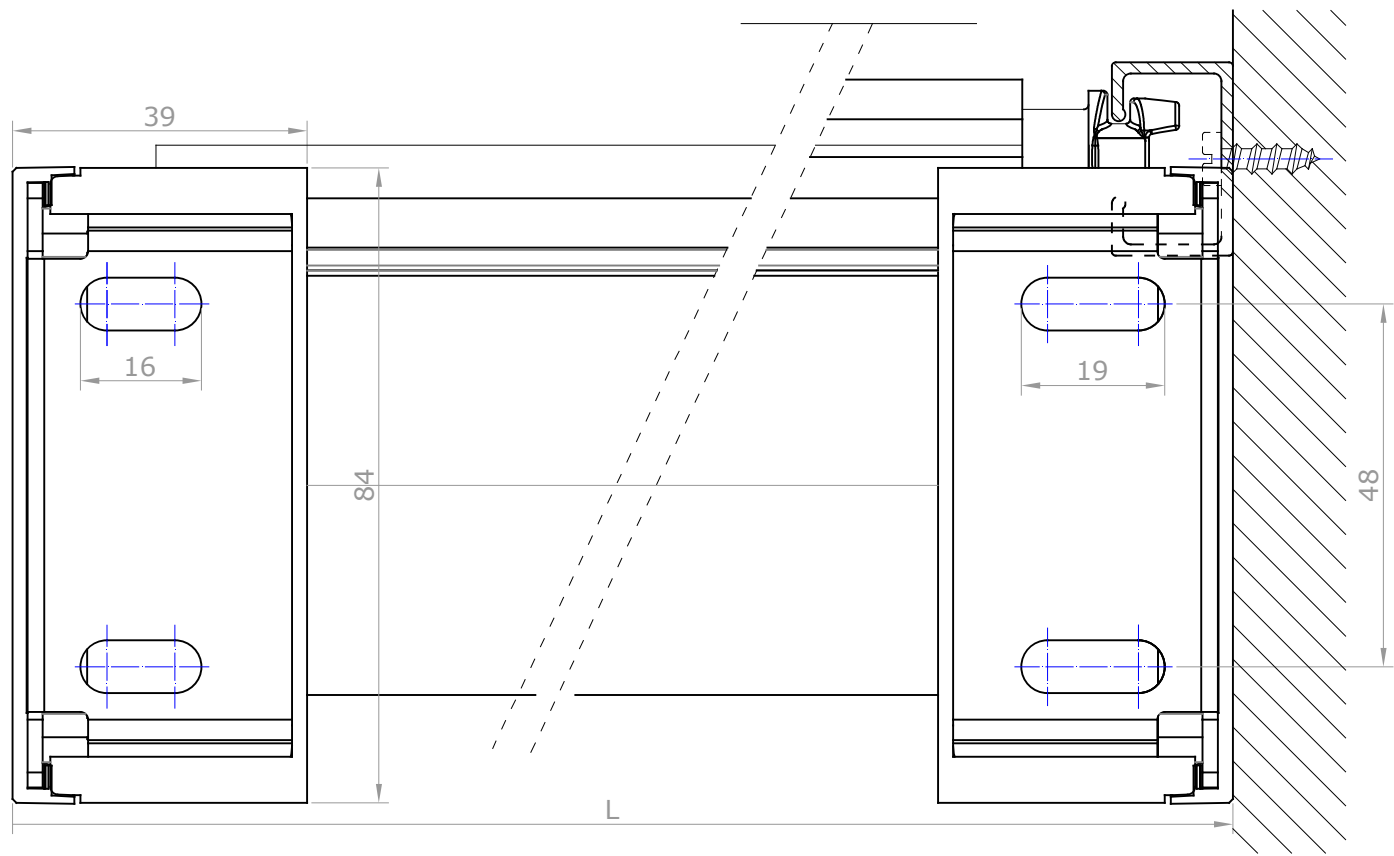
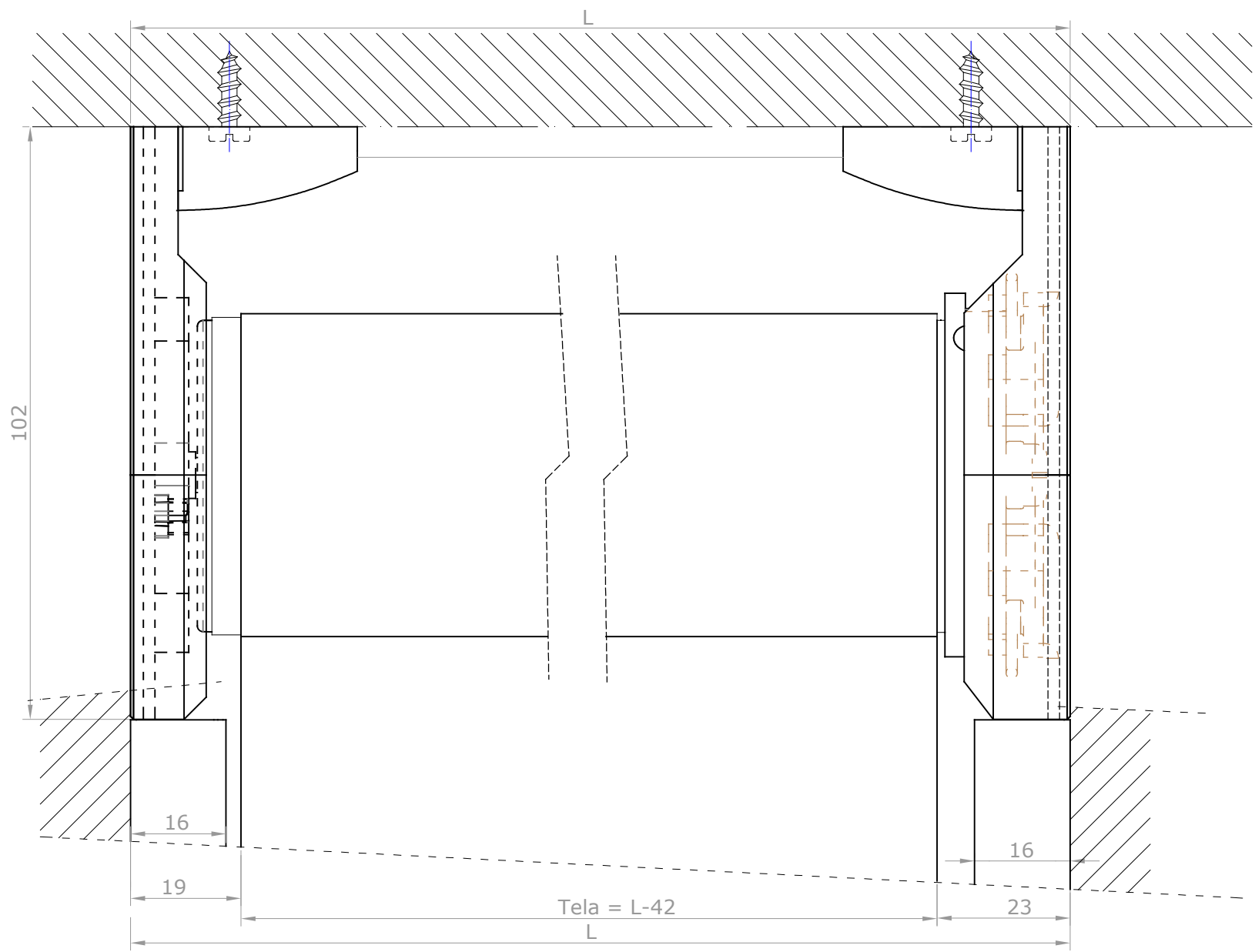


Detalle 1:1 terminal Slim 35

Opción tubo Ø55,Ø65

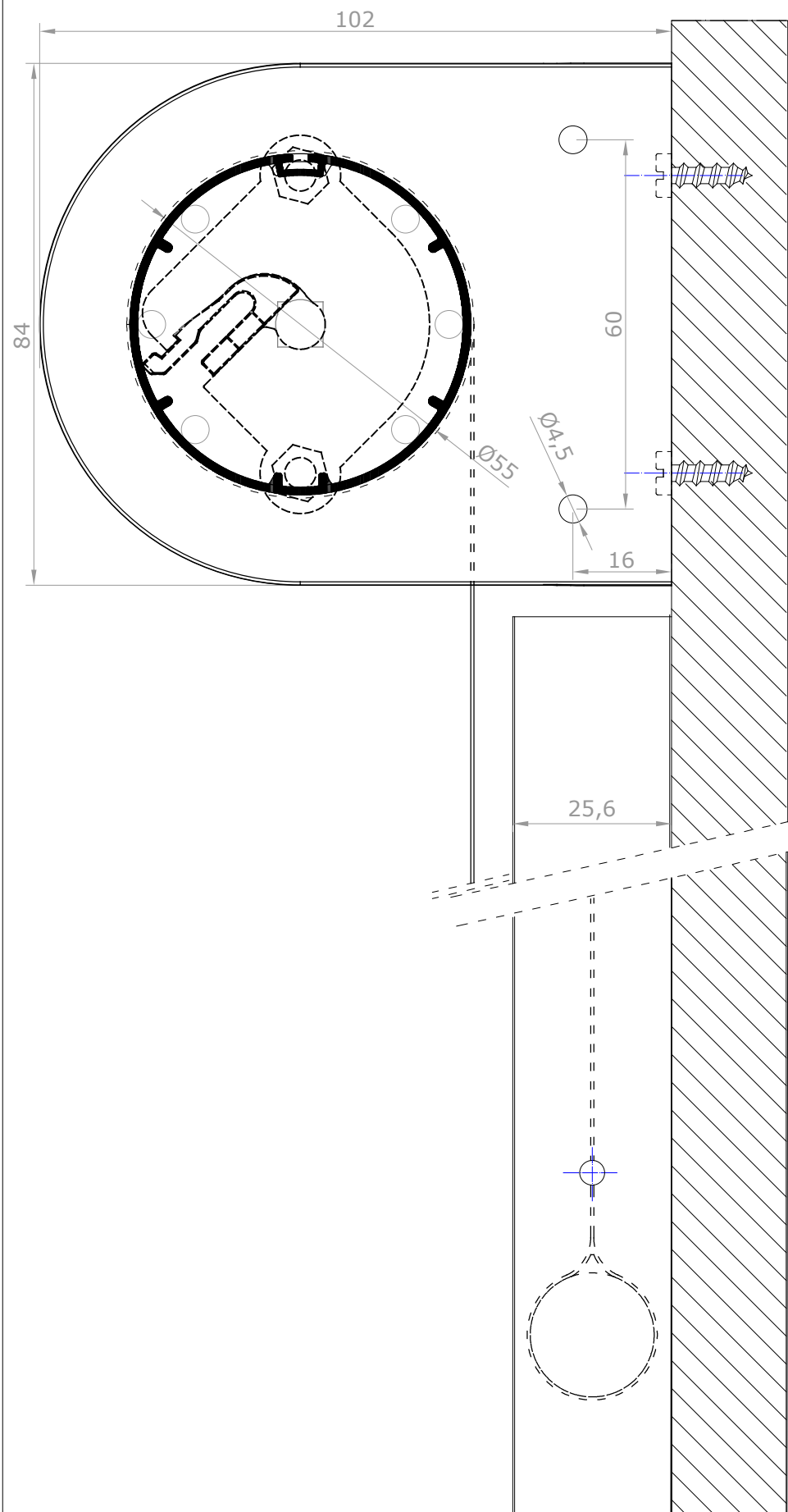
Taladro instalación lateral

F. REVIS.		<b>BANDALUX</b>	
REVISION	1 2 3 4 5 6 7 8 9		
FECHA	11-01-2017	PLANO N°	
DIBUJADO	Antonio F.	FORMATO	A-3
ESCALA	Cortina enrollable Premium Plus II Motor Guía U-201 Soportes instalación a techo. Guía U-201 instalación lateral Accionamiento motor 50 Terminal oculto de Ø20mm Tubo Ø55mm		
1/1			

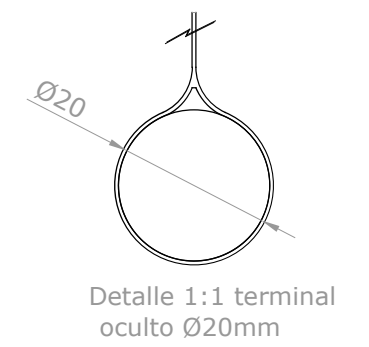
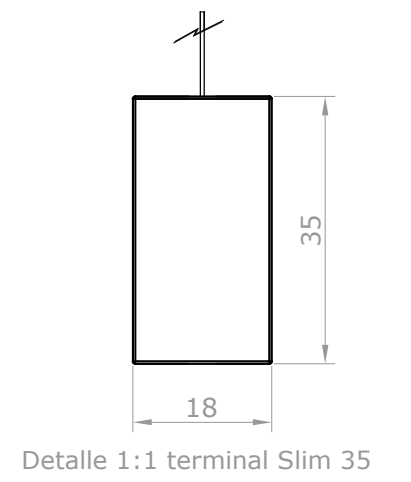
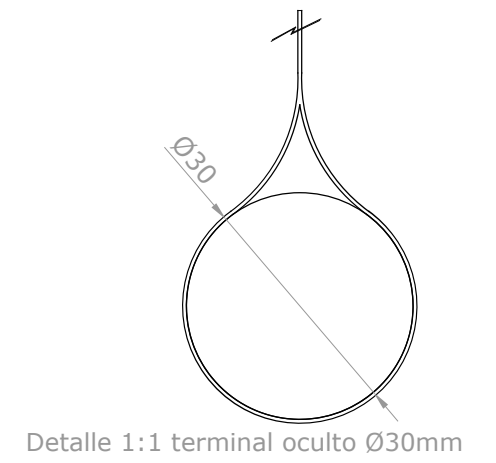
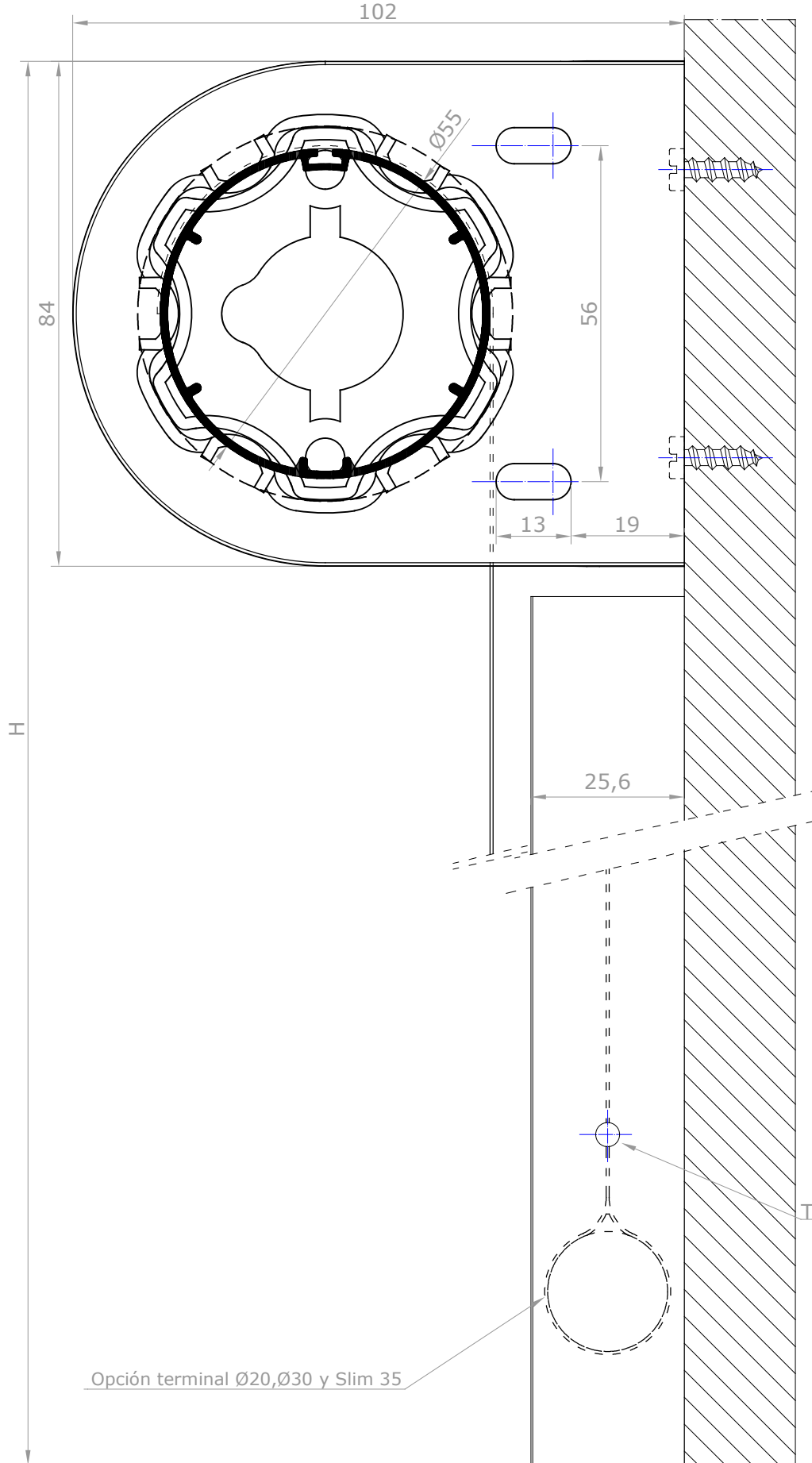


F. REVIS.		BANDALUX	
REVISION	123456789		
FECHA	11-01-2017	PLANO Nº	
DIBUJADO	Antonio F.	FORMATO	A-3
ESCALA	Cortina enrollable Premium Plus II Motor Guía U-201 Soportes instalación a techo. Guía U-201 instalación lateral Accionamiento motor 50 Terminal oculto de Ø20mm Tubo Ø55mm		
1/1			

# LADO APOYO



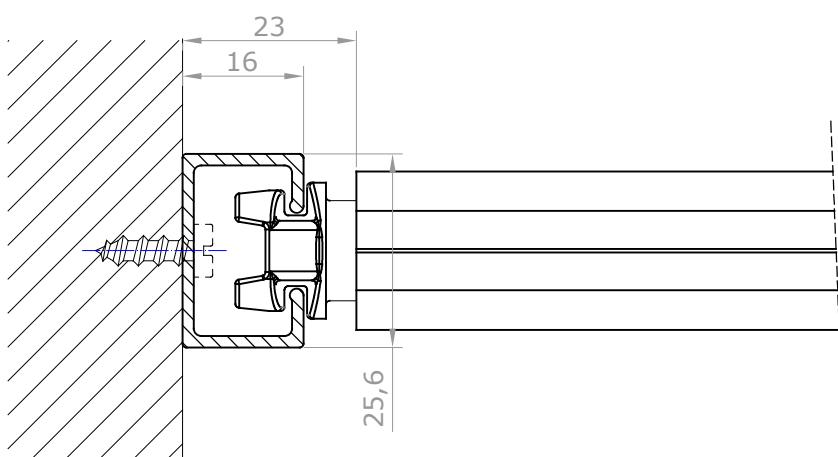
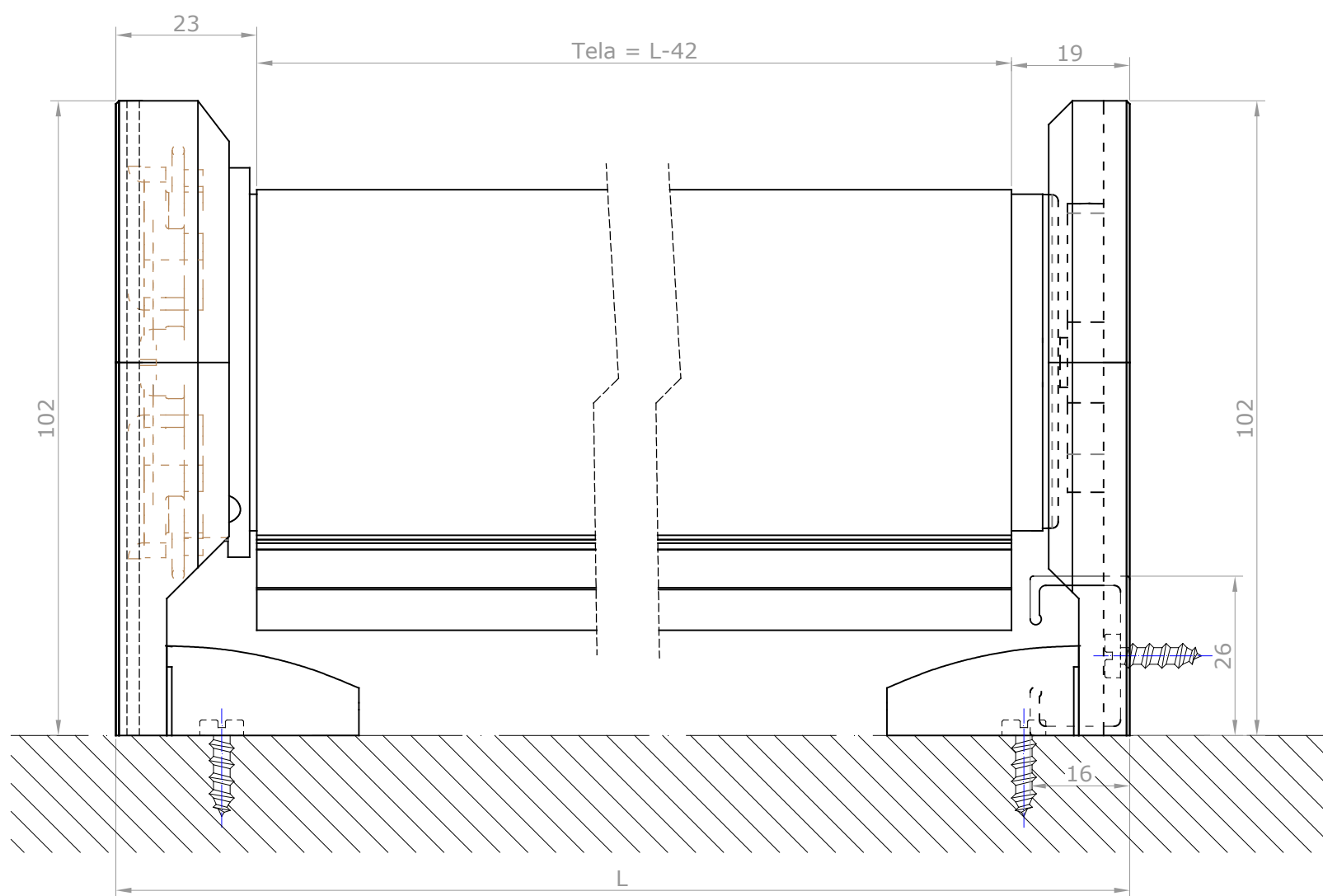
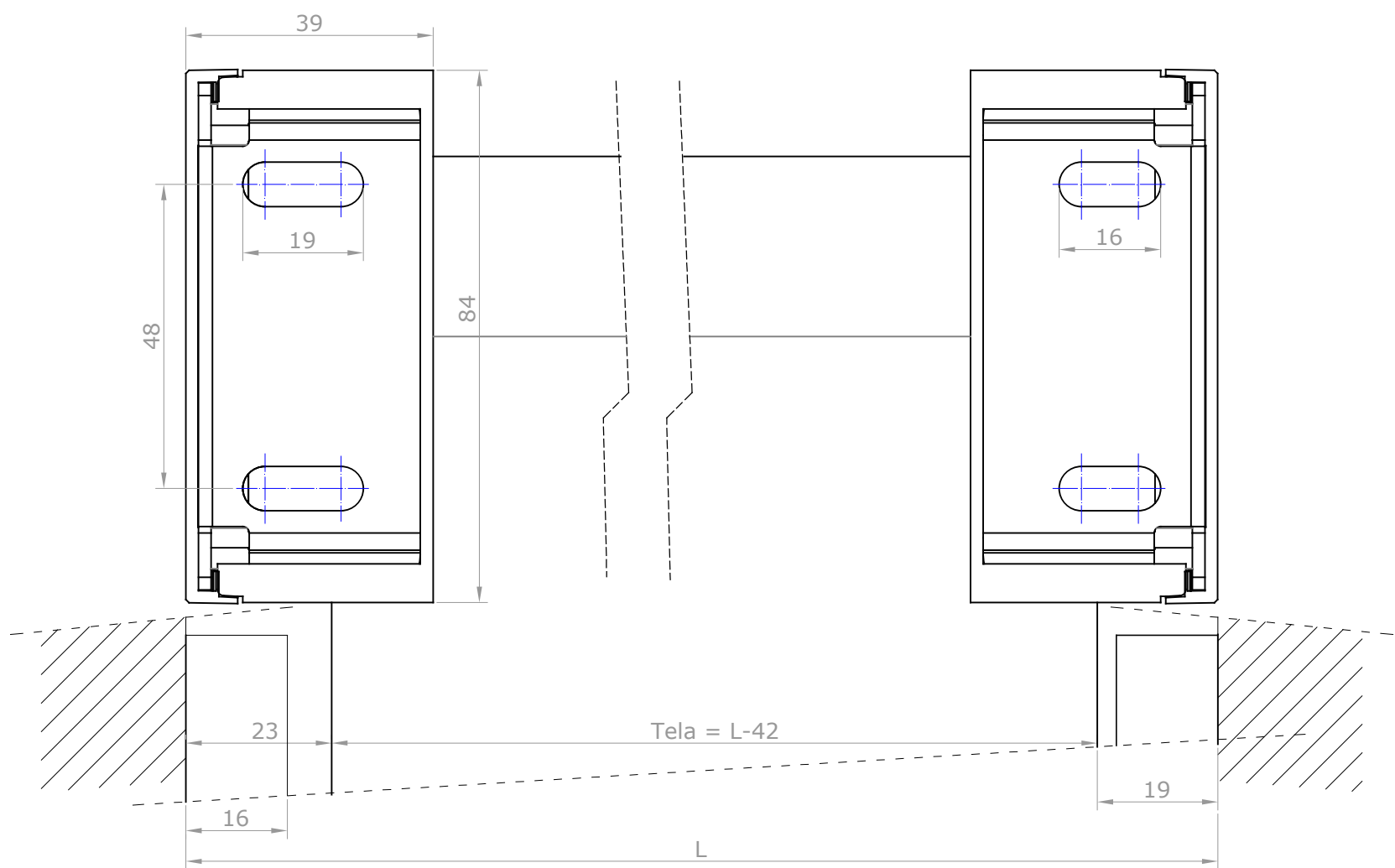
# LADO MANDO



Taladro instalación lateral

Opción terminal Ø20,Ø30 y Slim 35

F. REVIS.		BANDALUX	
REVISION	123456789		
FECHA	11-01-2017	PLANO Nº	
DIBUJADO	Antonio F.	FORMATO	A-3
ESCALA	Cortina enrollable Premium Plus II Motor Guía U-201 Soportes instalación a pared. Guía U-201 instalación lateral Accionamiento motor 50 Terminal oculto de Ø20mm Tubo Ø55mm		
1/1			



F. REVIS.	BANDALUX		
REVISION			
FECHA	11-01-2017	PLANO N°	
DIBUJADO	Antonio F.	FORMATO	A-3
ESCALA	Cortina enrollable Premium Plus II Motor Guía U-201 Soportes instalación a pared. Guía U-201 instalación lateral Accionamiento motor 50 Terminal oculto de Ø20mm Tubo Ø55mm		

1/1